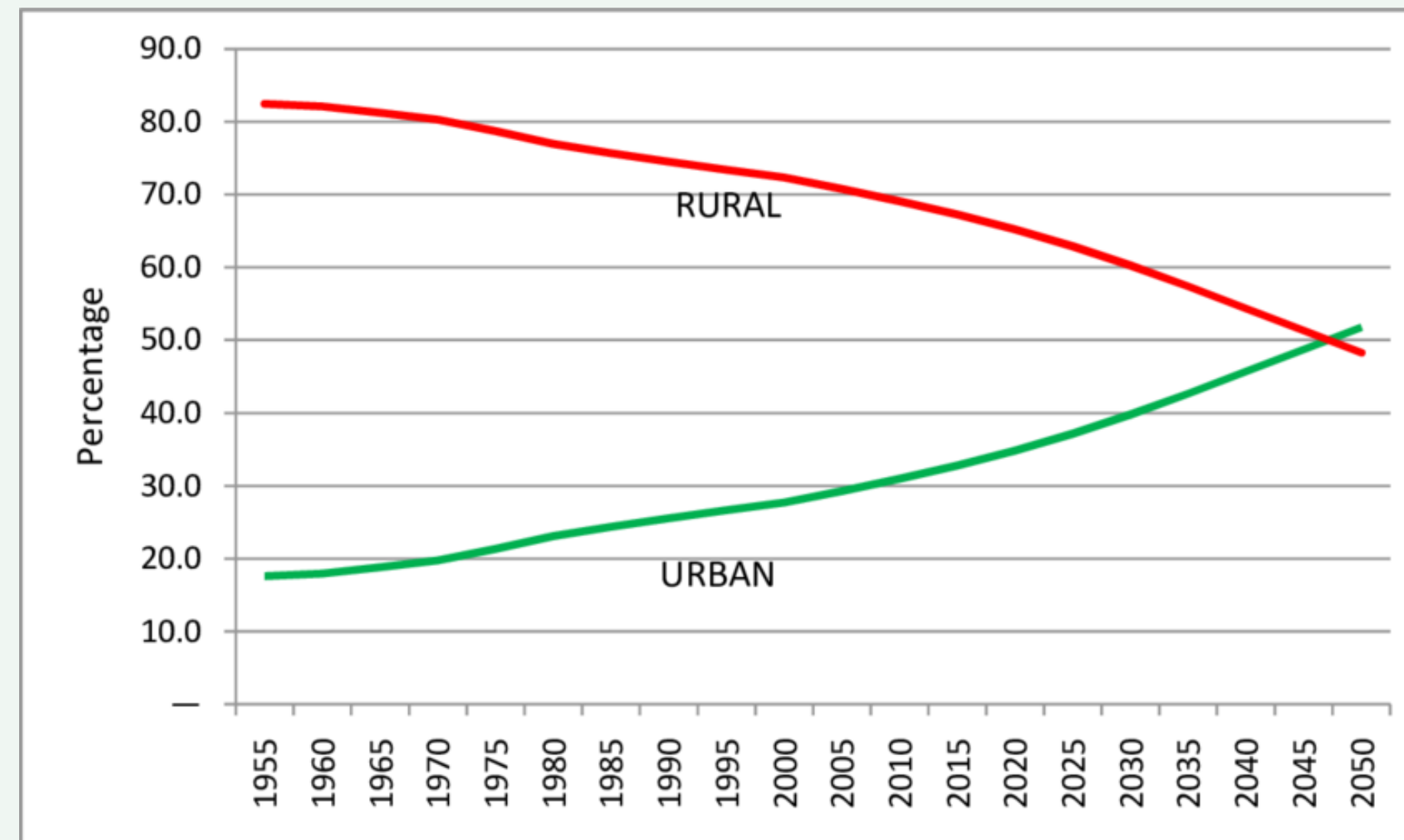


Self Sufficient, Self Reliant & Self Sustaining Village

BACKGROUND

“India lives in villages” were the golden words of Mahatma Gandhi many decades ago. Though there is substantial migration from rural to urban areas, still almost 68% of India continues to live in rural areas.

As per Economic Survey - 2017, nearly nine million Indians migrate every year to cities looking for better work opportunities as the rural areas are still facing issues like poverty, low literacy rates, and lack of basic infrastructures like schools, hospitals, better roads, running water, and sanitation. This gradual increase in migration has led to a burden on the cities resources and infrastructure. By 2050, it is estimated that around half of India will be living in urban India.



GAP BETWEEN URBAN AND RURAL INDIA

Sector	Parameter	Urban	Rural
Expenditure Poverty	% of people below poverty line (2011-12) (Tendulkar Estimates)	14%	26%
	% of people below poverty line (2011-12) (Rangarajan Estimates)	27.2%	31.3%
Education	Literacy Rate - 2011 #	85%	68.9%
	Average Year of School Education of Working Population ##	8.42	4.72
Health	Infant Mortality Rate (IMR) -2011*	28	46
	Life Expectancy at Birth (2002-06**)	68.8	62.1

#SOURCE : CENSUS 2011, ##SOURCE : NSS 2009-11 RURAL URBAN DIVIDE IN INDIA,2012, *SOURCE: FAMILY WELFARE STATISTICS IN INDIA 2011, **SOURCE: NATIONAL HEALTH PROFILE,CBHI

OUR MISSION

To transform as many villages in India into a self sufficient, self reliant & self sustaining village by developing and implementing a pragmatic and holistic village development model(For the people, by the people) that is based on multidimensional aspects including health, education, drinking water, livelihood & women empowerment-related issues.

TO ACHIEVE THIS GOAL, THE PROGRAM WILL BE WORKING FOR:

ADVOCACY		FECILITATOR	
HELP TO AVAIL GOVERNMENT SPONCERED SCHEMES AND PROJECTS	HELP TO AVAIL SCHEMES AND PROJECTS SPONCERED BY PRIVATE NGO'S AND OTHER PRIVATE ORGANISATIONS	HELP IN IMPLEMENTATION OF SCHEMES AND PROJECTS SPONCERED BY JAMIAT ULEMA-I HIND (ISLAH-E-MASHIRA,JYC ETC.	PLANNING AND IMPLEMENTATION OF PROJECT DESIGNED BY JAMIAT MODEL VILLAGE LIKE JVS,JAMIAT PAATHSHALA , SWAWLAMBHI SAMITI ETC.

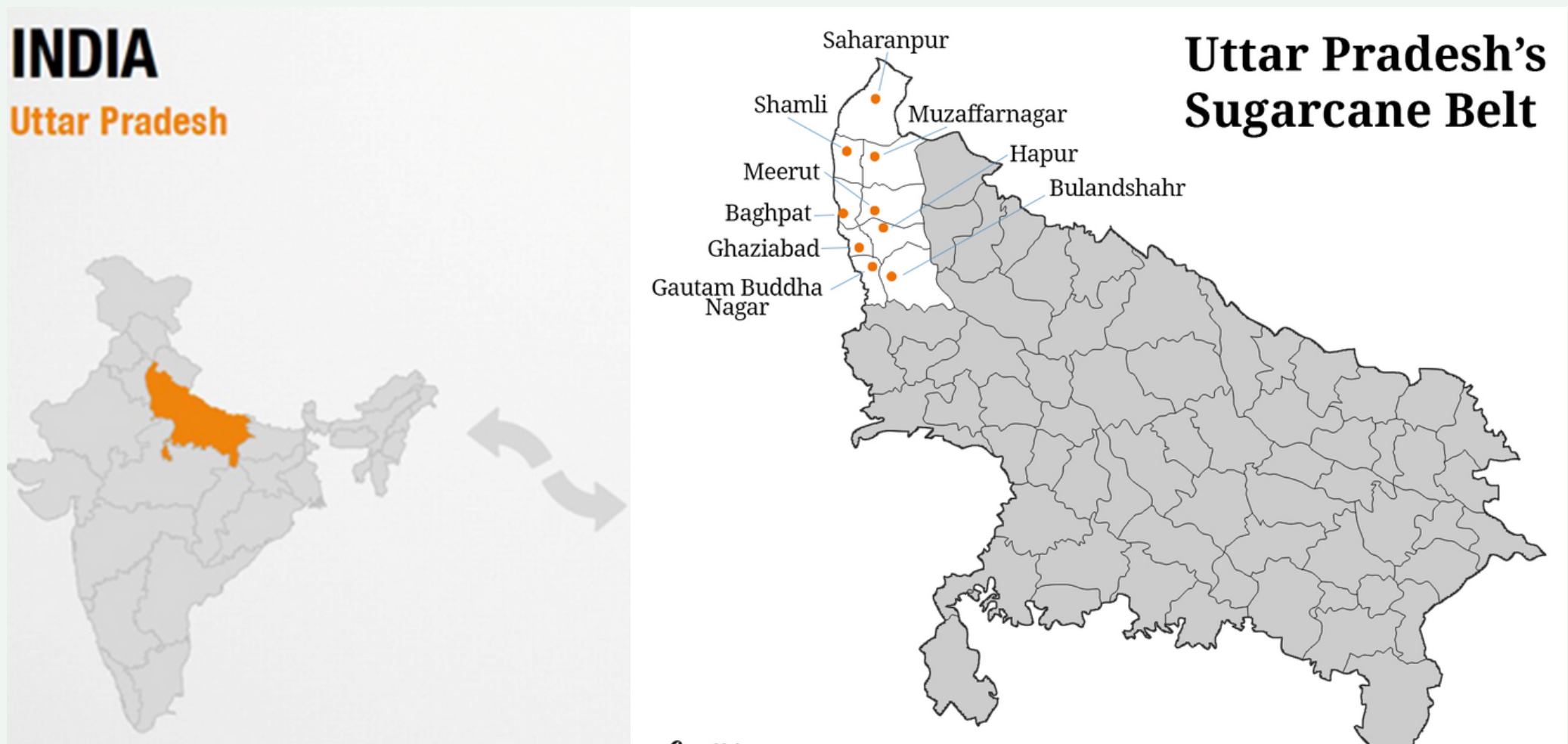
The program’s main objective is to improve and strengthen the socio-economic conditions of deprived sections of the country by providing access to welfare schemes, ensuring education, improving health & hygiene, creating livelihood, empowering women to attain good quality of life, and reducing inequality in society.

- A fully-operational Gram Panchayat and local government that will be responsible for the holistic development of the area.
- To provide access to improved basic amenities, including educational institutions, healthcare facilities, drinking water, and sanitation, along with the rights and entitlements.
- To prepare mechanisms for empowering women, improving health conditions among the target population, and ensuring an increase in retention rate and enrollment of children in schools.
- To identify the centrally and state-sponsored schemes for different vulnerable sections and communities.
- To prepare mechanisms for implementing welfare schemes and social welfare projects at the grass-root level.

Components of Model Village Program

- To create masjid wise halqa Committees(Area/Circle Committee)
- To induct and train halqa-wise village champions(Volunteers)
- To implement Project Jann Vikas Seva
- To constitute Swawlambi Samiti
- To form Scouting dall in every village
- To establish Munazzam maktab in every village

AREA OF OPERATION



Current List of Villages

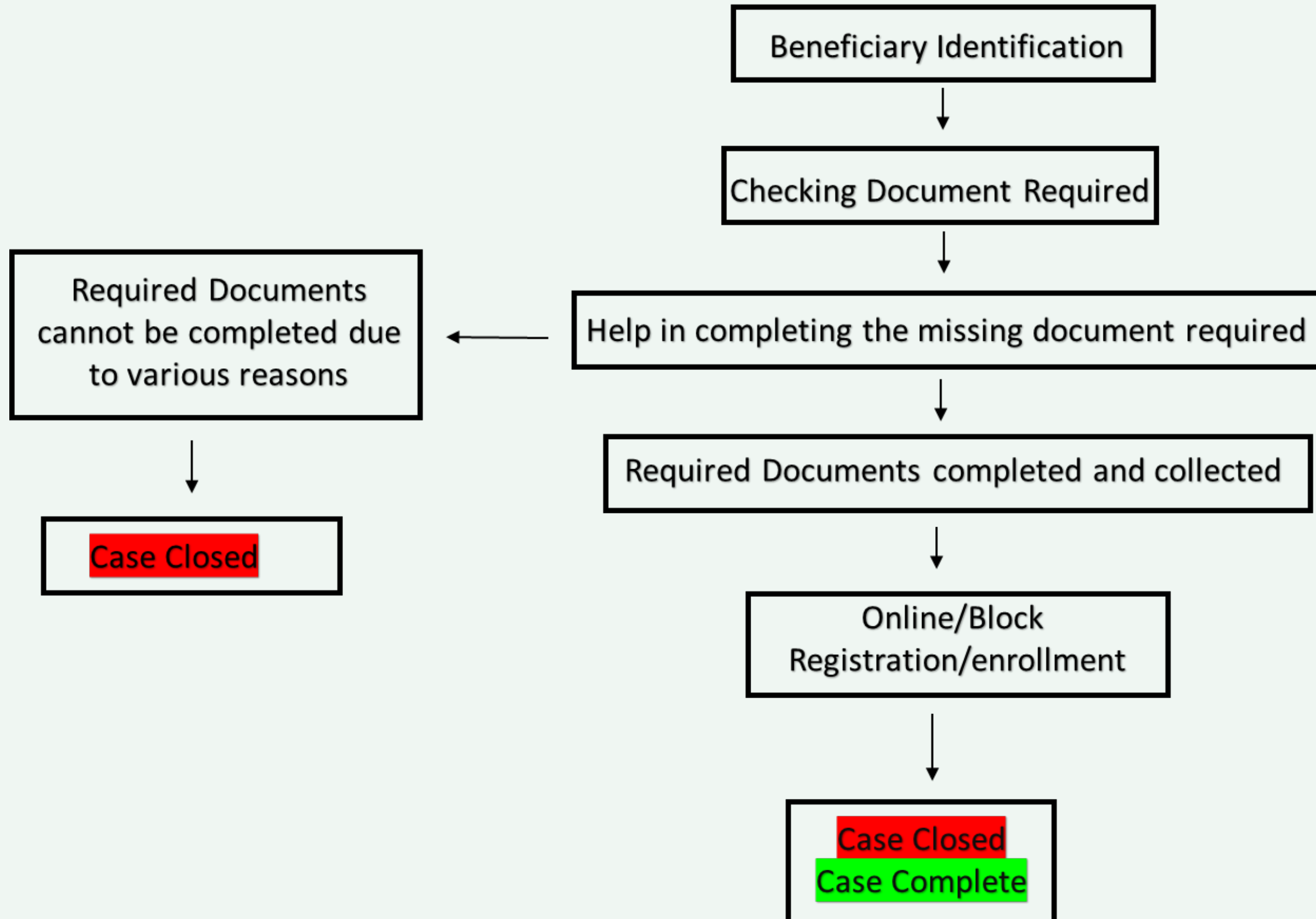
Distt.	Village
Shamli	Malakpur
	Mohammadpur
	Garhi Daulat
	Manna Majra
	Garhi Miyan
Baghpat	Fauladnagar
	Palra
	Roshangarh
	Tanda
	Navada
Muzaffarnagar	Jaroda
	Dolatpur
	Jatvada
	Mansoorpur
	Bihari
Saharanpur	Banhera
	Imleya
	Wajid Pura
	Turmat Khedi
	khata khedi
Hapur	Himmat Pur
	allahbakshpur
	Fuldi
	Atsaini
	Badarkha

JANN VIKAS SEVA

DOCUMENTATION, SCHEMES AND POLICIES RELATED WORK DONE



JAN VIKAS SEVA



Jan Vikas Center helps in linking the village community with the ongoing government schemes.

The majority of these government schemes are designed to help the economically deprived, rural, or vulnerable people in society. The beneficiaries of these government schemes mostly comprise of economically backward or weaker sections of society and low-income families.

The advocacy role played by JVS has helped more than **3000+** beneficiaries till date.

HOW WE WORK

DOOR-TO-DOOR CAMPAIGN



VISIT AT OUR CENTER



COMMUNITY CAMPAIGN

VILLAGE CHAMPIONS



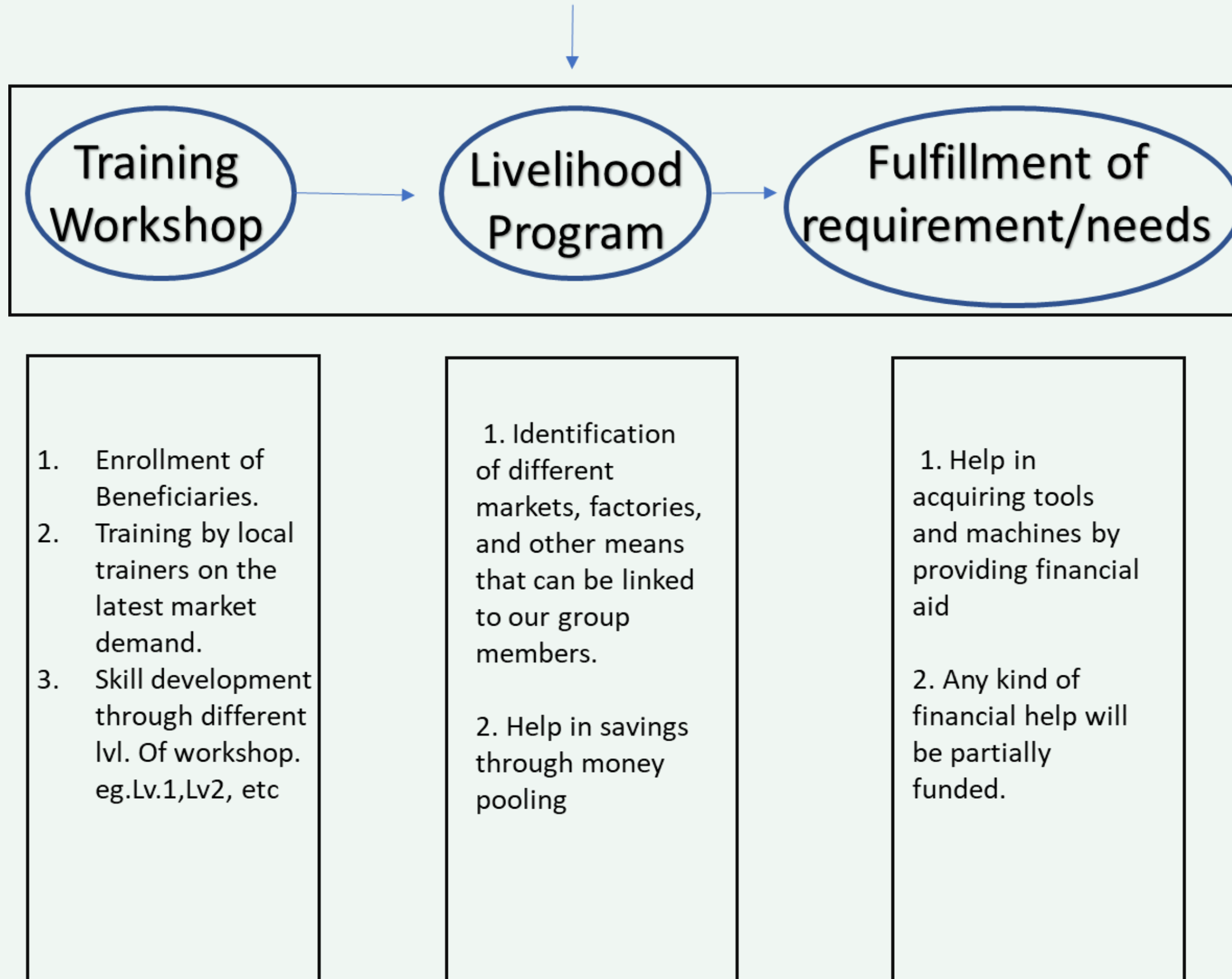
JAMIAT SWAWLAMBHI SAMITI

जमिअत स्वावलंबी समिति

(Promoting Livelihood ,Empowering Women)



Jamiat Swawlambi Samiti



Jamiat Swawlambi Samiti is a livelihood project for women residing in JMV.

It aims to provide a means of earning through tailoring and sewing work.

This program aims to provide a sewing machine and training in tailoring and sewing to create a sustainable livelihood and an ongoing source of income to help girls and women to climb out of poverty. We as a social organization intend to work towards empowering women through various interventions to enable women to be financially independent. The 'Sewing Machine Distribution and training program will support these economically vulnerable women who are needy, have some experience or are capable to learn sewing & tailoring, attended a tailoring school, or have a certificate in tailoring but lacks the financial support to buy the sewing machine.

PAST WORK DONE



Livestock For Livelihood



The primary objective of Livestock for Livelihood is about bringing hope to women, with special focus on single mothers & widows by helping them in livestock rearing for sustainable means of earning and supporting the family.



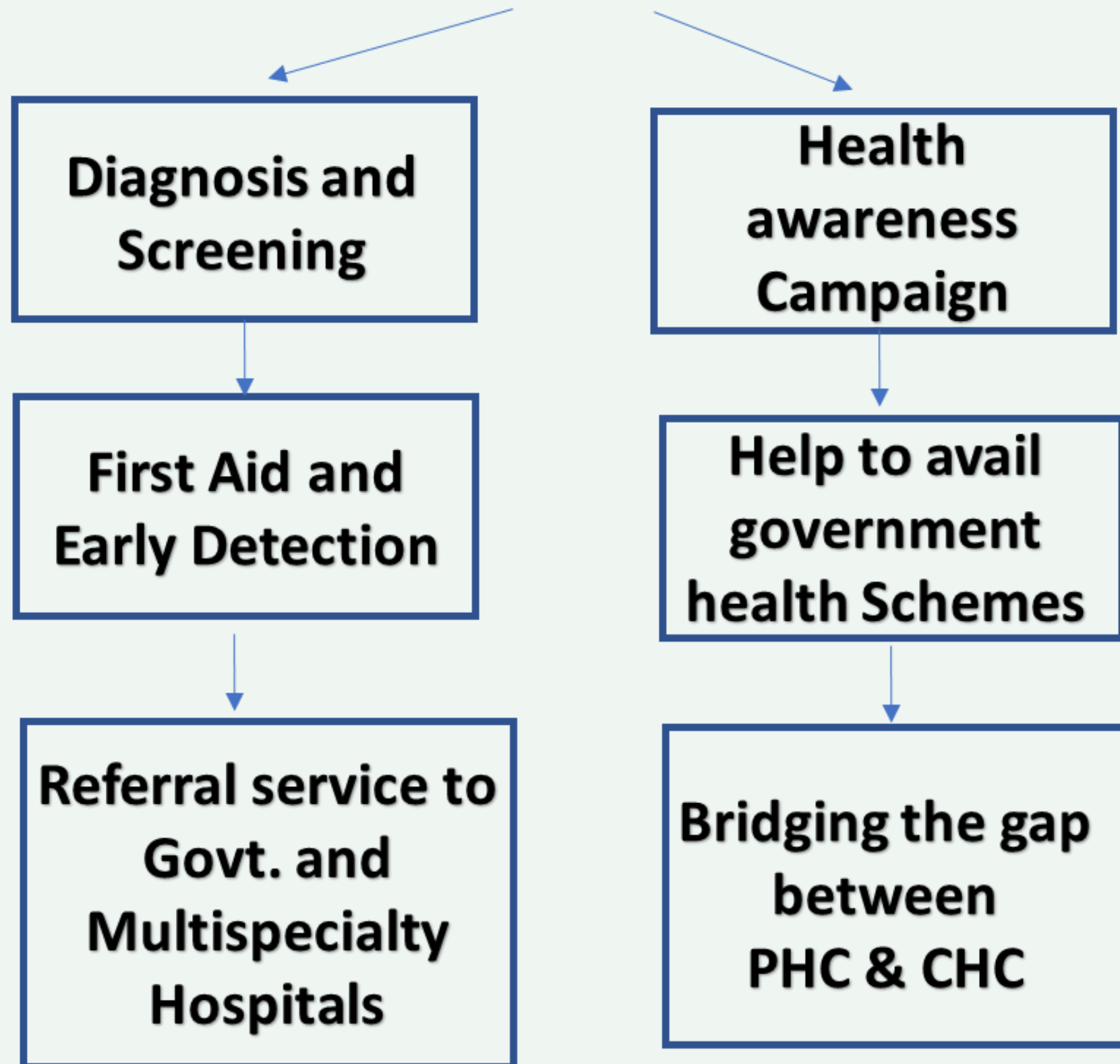
Jamiat Paathshal strives to increase the retention rate of ongoing children and ensures enrollment of school dropouts into the NIOS (National School of Open Learning) program, It also provides children with quality education through NFE classes (Non-Formal Education)

Health Camps



A team of health professionals conducts the health camp in the community (Focus Areas: Gynecologist, General Medicine, Physiotherapy and Dental Doctor)

Sehat Center (Proposed)



Sehat Center is a proposed project that tries to bridge the gap between the community members and the available healthcare facilities. It also aims to create health awareness among the community regarding various health issues.

MILESTONES ACHIEVED

Index	Total
District	5
Villages	26
Baseline Survey (House Hold Covered)	1100
Street Light Installed	5
JAN VIKAS SEVA	3000+
Livestock Donated (Buffalo)	5
Sehat Center	1
Sewing Machine Donation Program	81
Sawawlambi samiti	8
Village Champions	81

GET INVOLVED & SUPPORT US

Jamiat Model Village aims to create self sufficient, self reliant & self sustaining village.

Let's Join hands & try to bring a little change together.

OUR BANKING
PARTNER



A/c Name-Jamiat Ulama-i-Hind

A/c No - 430010100148641

Axis Bank Ltd, K-1998 Chittaranjan

Park Branch, New Delhi 110019,

IFS Code - UTIB0000430

Type of account - Savings

WEBSITE LINK

https://www.jamiat.org.in/accounts/donation_landing_page/



Get In Touch



+91 1123317729
+91 9711779580



<https://www.jamiat.org.in/>



**No. 1, Bahadur Shah
Zafar Marg, New Delhi
110002**

An Initiative of



جمعية علماء هند
Jamiat Ulama-i-Hind
जमीअत उलमा-ए-हिन्द